

NetBeez and Cisco DNAC Integration



NetBeez

NetBeez is a distributed network performance monitoring solution that tests LAN, WAN, and WiFi networks from the user perspective, measuring and reporting KPI of network and service quality.

References

NetBeez website - [link](#)

NetBeez on Cisco marketplace - [link](#)

NetBeez documentation - [link](#)



NetBeez Monitoring Tests

Test	Primary Metric	Test Interval *	Detection Time *
PING	Round-Trip-Time, Packet Loss	5 seconds	25 seconds
DNS	DNS Lookup Time	30 seconds	2.5 minutes
HTTP	HTTP Get Time	60 seconds	5 minutes
Traceroute	Hop Count, RTT, MTU	120 seconds	User-defined
iPerf	TCP/UDP/Multicast Throughput	Scheduled	n/a
VoIP	Jitter, Packet Loss, MOS	Scheduled	n/a
Speed Test	Download/Upload Throughput	Scheduled	n/a

* Default settings

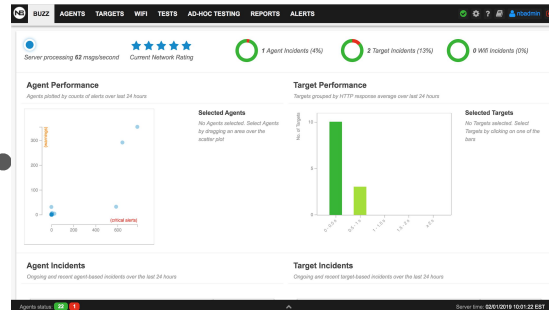
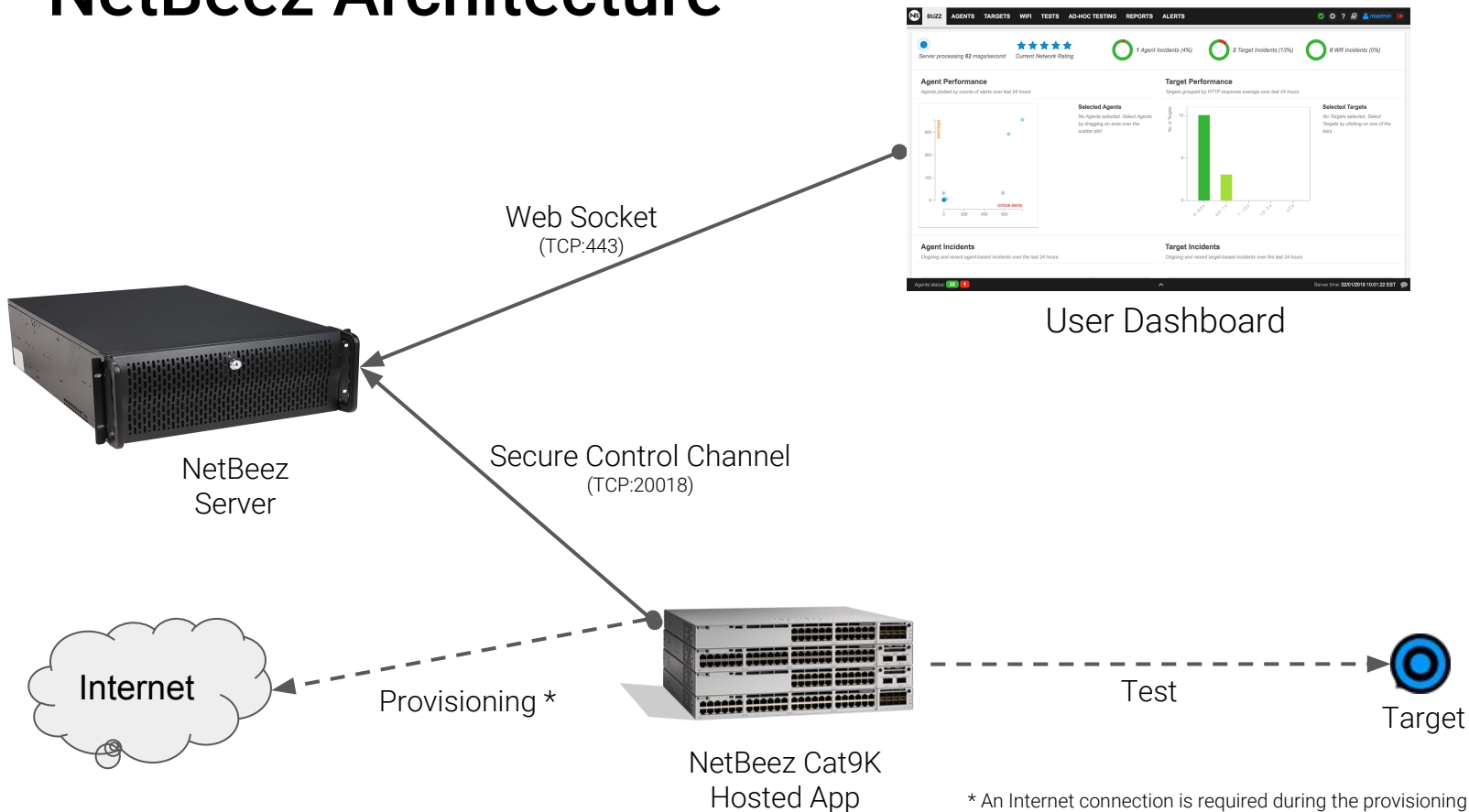


NetBeez Use Cases

Use Case	What Is It?	NetBeez Solution
Proactive Detection	Detect network problems as soon as they occur, before the users report them to the help desk.	Active monitoring tests performed by monitoring agents installed at remote locations where the users sit.
Network Troubleshooting	Simplify troubleshooting of network problems that can cause interruption of network services or applications.	Pinpoint network versus application issues by correlating alerts under agents or targets.
Performance Monitoring	Build a performance baseline of a network infrastructure to identify areas where there are problems.	Run network telemetry tests like ping, iperf, and speed test from across a network infrastructure.
End-User Experience	Verify the overall experience of the end-users against WiFi and cloud or web applications.	Simulate user interaction to web applications via WiFi and Ethernet sensors deployed at remote sites.



NetBeez Architecture



User Dashboard

* An Internet connection is required during the provisioning of the NetBeez hosted app to get configuration settings (e.g. NetBeez server address and encryption keys for the secure control channel)



Cisco DNAC Prerequisites

- A Cisco DNAC platform
- A Cisco Catalyst 9000 with a front panel USB stick of 128GB or bigger
- A DHCP server or a static IP address for the virtual machines
- A NetBeez server, if you don't have one:
 - Request a 30-day trial license for a dedicated NetBeez dashboard hosted in the cloud at <https://resources.netbeez.net/netbeez-cisco-evaluation>
 - Within 24 hours from your request, you will receive a confirmation email with the instructions needed to access your cloud dashboard and activate NetBeez on Cisco DNA



DNAC Procedure

1. Download the NetBeez Cisco app here:
<https://storage.googleapis.com/netbeez-public/netbeez-cisco.tar>
2. Import the NetBeez Cisco app downloaded at step 1 into your Cisco DNA. Follow the documented flow to install the Netbeez app. You will need the secret key associated to your NetBeez dashboard
 - a. The secret key is used by the NetBeez Cisco App to download and apply configuration settings from the cloud. If you have an internal HTTPS proxy, please include this information in this step
3. On the NetBeez dashboard create monitoring targets and schedule network performance tests

